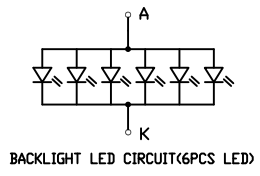
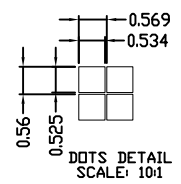
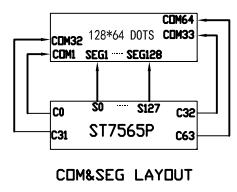


PIN ASSIGNMENT

PIN	SIGNAL
1	/CS1
2	/RES
3	A0
4	SCL
5	SI
6	VDD
7	
8	VSS
9	
10	VOUT
11	CAP3P
12	CAP1N
13	CAP1P
14	CAP2P
15	CAP2N
16	V4
17	V3
18	V2
19	V1
20	V0
21	TS1
22	TS2
23	A
24	K



DISPLAY TYPE	FSTN
	POSITIVE
	TRANSFLECTIVE
FRONT POLARIZER	
OPERATING METHOD	1/65DUTY,1/9BIAS
DRIVER VOLTAGE	VDD=3.0V
OPERATION VOLTAGE	VLCD=9.0V
VIEWING ANGLE	12:00
OPERATION TEMPERATURE	0°C TO 50°C
STORAGE TEMPERATURE	-10°C TO 60°C
CONNECTOR TYPE	FPC
LCD CONTROLLER/DRIVER	ST7565P
BACKLIGHT COLOR	GREEN If=90mA, Vf=3.0±0.2V

- NOTE:
 1. GENERAL TOLERANCE: ±0.3.
 2. (..) IS REFERENCE DIMENSION.
 3. * CRITICAL DIMENSION
 4. COMPLYABLY RoHS.

VER.	SYMBOL	AMENDMENT	SIGN	DATE	CUSTOMER'S APPROVAL	DRAWN	ZDL	TITLE	DRAWING NO.
01		First Issue	ZDL	12.04.17		EE.CHECKED	FJ	MODULE SPEC.	STR-TG0630A
					PE.CHECKED	FE			
					APPROVED	YB			
								BOM NO.:BM120410-04	UNIT mm SCALE FIT
									3rd Angle SHEET 1 OF 1
								TRUEVISION TECHNOLOGIES LTD.	