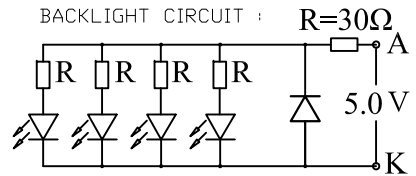
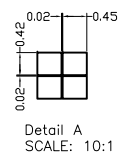
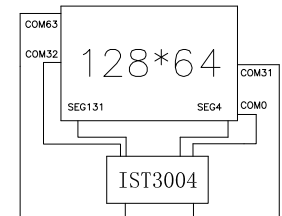


PIN	SYMBOL
1	CS0
2	RST
3	A0
4	WR
5	RD
6	D0
7	D1
8	D2
9	D3
10	D4
11	D5
12	D6
13	D7
14	VDD
15	VSS
16	VOUT
17	C3+
18	C1-
19	C1+
20	C2+
21	C2-
22	C4+
23	V4
24	V3
25	V2
26	V1
27	V0
28	C68
29	LED-K
30	LED-A

- NOTE:
1. GENERAL TOLERANCE: ±0.2.
 2. (...) IS REFERENCE DIMENSION.
 3. * CRITICAL DIMENSION
 4. RoHS COMPLIANT



COM&SEG LAYOUT



DFSTN	
Display Type	NEGATIVE
	TRANSMISSIVE
Front Polarizer	
Operating Method	1/65 DUTY,1/7 BIAS
Viewing Angle	6 O'CLOCK
LCD Driver IC	IST3004
Operating Voltage	VDD=3.0V VLCD=10V
Operation Temperature	-20°C TO 70°C
Storage Temperature	-30°C TO 80°C
High Temperature/Humidity Storage	
Interface	6800/8080
Backlight	WHITE 5.0V

VER.	SYMBOL	AMENDMENT	SIGN	DATE	DRAWN	JLF	TITLE	DRAWING NO.			
					EE.CHECKED	DK		STR-TG1090A			
					PE.CHECKED	YY		UNIT mm SCALE FIT			
					APPROVED	WYL		3rd Angle SHEET 1 OF 1			
01		First Issue	JLF	11.12.15	CUSTOMER'S APPROVAL		MODULE SPEC.	BOM NO.: BM11214-12			
							TRUEVISION TECHNOLOGIES LTD				