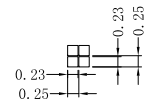
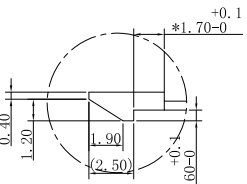


**PINOUT**

PIN	SIGNAL	PIN	SIGNAL
1	C31M	23	VM
2	C31P	24	VDD
3	XV0	25	VPP
4	V0	26	D8
5	VOUT2	27	D9
6	C26M	28	D10
7	C26P	29	D11
8	C25M	30	D12
9	C25P	31	D13
10	C24M	32	D14
11	C24P	33	D15
12	C23M	34	VCC
13	C23P	35	VSS
14	C22M	36	R/W_RD
15	C22P	37	RS
16	C21M	38	RST
17	C21P	39	E_WR
18	VOUT1	40	IM1
19	C11M	41	CS
20	C11P	42	NC
21	VG	43	A
22	VCI	44	K

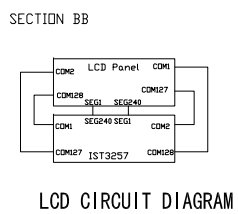
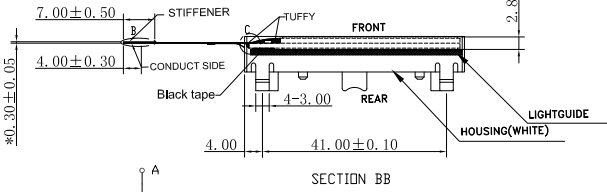


**DOTS DETAIL**  
SCALE: 10:1

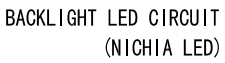


**DETAIL "D"**  
SCALE: 4:1  
(4 positions)

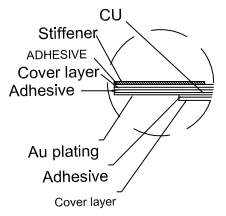
- NOTE:**
1. GENERAL TOLERANCE: ±0.20.
  2. (...) IS REFERENCE DIMENSION.
  3. \* CRITICAL DIMENSION
  4. COMPLIABLY RoHS.
  5. ACF for CDG of IC: CP6920F3(3um filler)



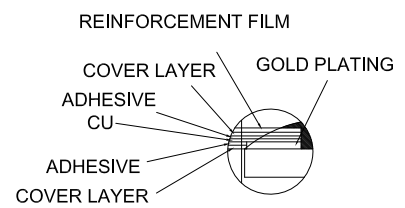
**LCD CIRCUIT DIAGRAM**



**BACKLIGHT LED CIRCUIT (NICHIA LED)**



**DETAIL B**



**DETAIL C**

DISPLAY TYPE	FFSTN
	POSITIVE
	TRANSMISSIVE
FRONT POLARIZER	
OPERATING METHOD	1/128DUTY,1/9BIAS
DRIVER VOLTAGE	VDD=3.0V
OPERATION VOLTAGE	VDP=14V
VIEWING ANGLE	9:00
OPERATION TEMPERATURE	-20°C TO 70°C
STORAGE TEMPERATURE	-25°C TO 75°C
CONNECTOR TYPE	FPC
INTERFACE	8080/6800 8-BIT
LCD CONTROLLER/DRIVER	IST3257
BACKLIGHT COLOR	NICHIA LED WHITE IF=60mA,Vf=3.2±0.3V

VER.	SYMBOL	AMENDMENT			DRAWN	LJW	TITLE	DRAWING NO. STR-TG9176			
					EE.CHECKED	TJP	<b>MODULE SPEC.</b>	CUSTOMER NO.			
				PE.CHECKED	TJP	UNIT    mm    SCALE    FIT					
				APPROVED	YB	3rd Angle  SHEET 1 OF 1					
01		First issue	LJW	13.05.30	CUSTOMER'S APPROVAL	BOM NO.:BM130527-02A					
			SIGN	DATE			<b>TRUEVISION TECHNOLOGIES LTD.</b>				